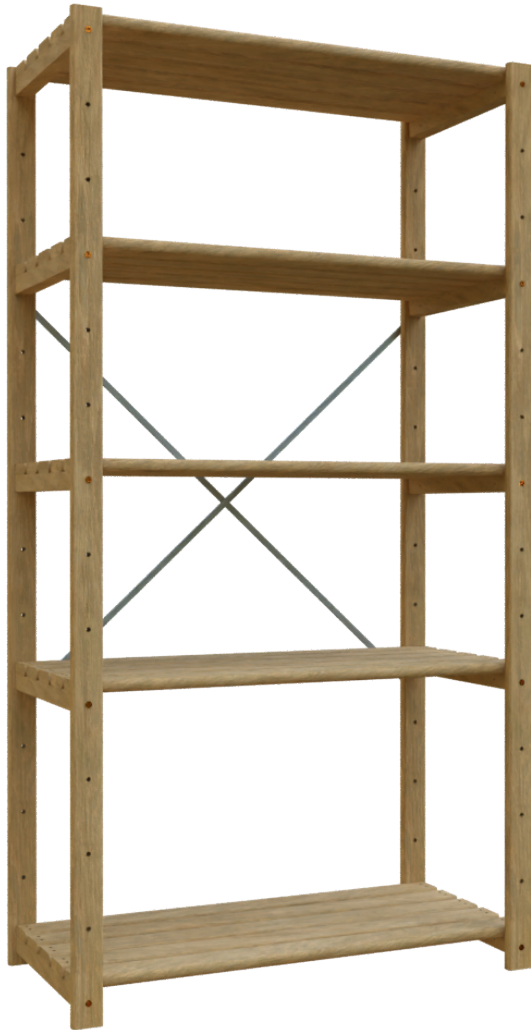


# ASSEMBLY INSTRUCTIONS



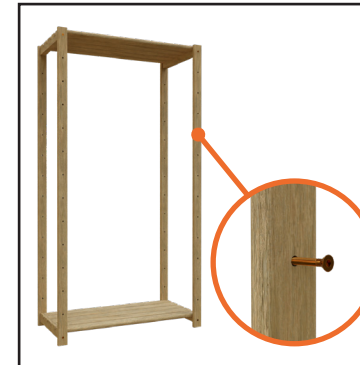
**Step 1:**  
 Remove all bolts from shelves. Take care not to lose any bolts!  
 Place the bottom shelf on the floor near the location where your unit will stand when completed.



**Step 2:**  
 Place the four legs one at a time in each corner of the bottom shelf in an upright position, securing tightly with the bolts.  
**Note:** Place narrow legs at either end of the unit. At this stage, the bottom shelves should be in place with the legs in an upright position.



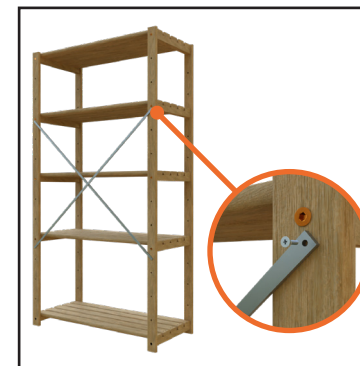
**Step 3:**  
 Place the top shelf in position but do not fasten the bolts completely. Ensure they have taken to the thread of the cross dowel. This gives the legs more play, making the assembly of intermediate shelves easier.



**Step 4:**  
 Decide where you want to place your intermediate shelf. Then, insert the remaining bolts into the corresponding holes.



**Step 5:**  
 Place the intermediate shelves into the positions indicated by the bolts. Stand back and ensure all shelves are where you want them to be then fasten.



**Step 6:**  
 Using the (8mm x 20mm) Posi Screws included.  
 Fix a Cross Brace, for lateral stability, to the back of every other bay in the unit between the adjacent uprights.  
 Attach the upper ends of the braces to the centre of one of the 4-hole patterns on each of the adjacent uprights in multi bay units, roughly at eye level, or to the centre of one of the 2-hole patterns in a single bay unit. Step back, ensure the shelving is level, then screw the lower ends of the braces to the bottom part of the uprights.